

Sinfonie Nr. 40

g-Moll / G minor

1. Satz

Molto allegro [$\text{♩} = 96-100$]

Wolfgang Amadeus Mozart

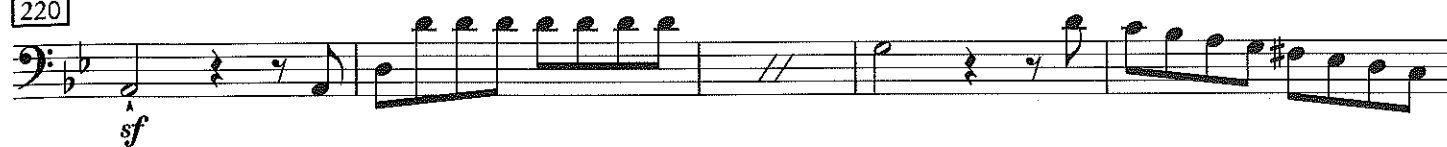
KV 550

This page contains the musical score for the first movement of Mozart's Symphony No. 40 in G minor, measures 114 through 211. The score is written in bass clef with a key signature of two flats (B-flat and E-flat). The tempo is marked 'Molto allegro' with a quarter note equal to 96-100 beats per minute. The dynamics range from piano (*p*) to forte (*f*). The score includes various musical notations such as slurs, accents, and dynamic markings. Measure numbers 114, 118, 122, 126, 130, 134, 192, 196, 201, 206, and 211 are indicated in boxes at the beginning of their respective staves. A double bar line is present in measure 134, indicating a section break.

215



220



278



282



4. Satz

Allegro assai [$\text{♩} = 116$]

45



51



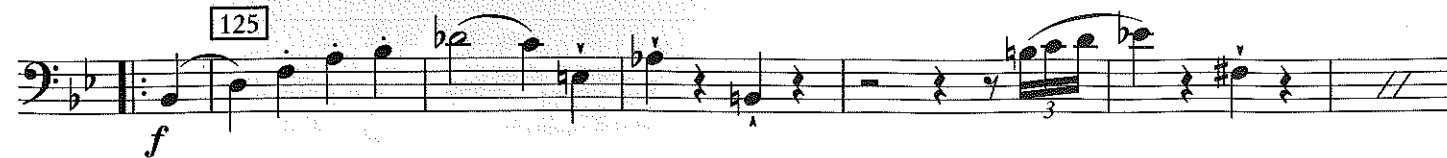
55



59



125



153

VI. II

f

Musical notation for measure 153, featuring a double bar line, a treble clef with a *f* dynamic marking, and a bass clef with a *f* dynamic marking.

156

Musical notation for measure 156, showing a bass clef with a complex melodic line.

161

1

Musical notation for measure 161, featuring a bass clef with a *f* dynamic marking and a first fingering (1) indicated above the staff.

168

Musical notation for measure 168, showing a bass clef with a complex melodic line.

174

Musical notation for measure 174, showing a bass clef with a complex melodic line.

180

Musical notation for measure 180, showing a bass clef with a complex melodic line.

186

Musical notation for measure 186, featuring a double bar line and a *f* dynamic marking.

194

Musical notation for measure 194, showing a bass clef with a complex melodic line.

200

Musical notation for measure 200, featuring a double bar line and dynamic markings *sf*, *sf*, and *f*.

225

Musical notation for measure 225, showing a bass clef with a complex melodic line and a *f* dynamic marking.

231

Musical notation for measure 231, showing a bass clef with a complex melodic line and a double bar line.